

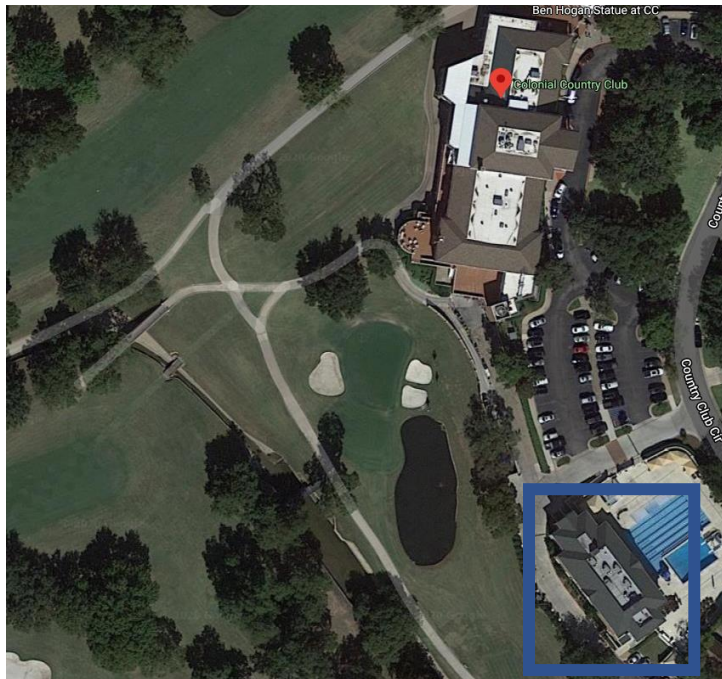
**TOURNAMENT - DISTRIBUTION CENTER LOCATION**

**CHARLES SCHWAB CHALLENGE**

Clubs and Hard Goods: Golf Learning Center at the Driving Range

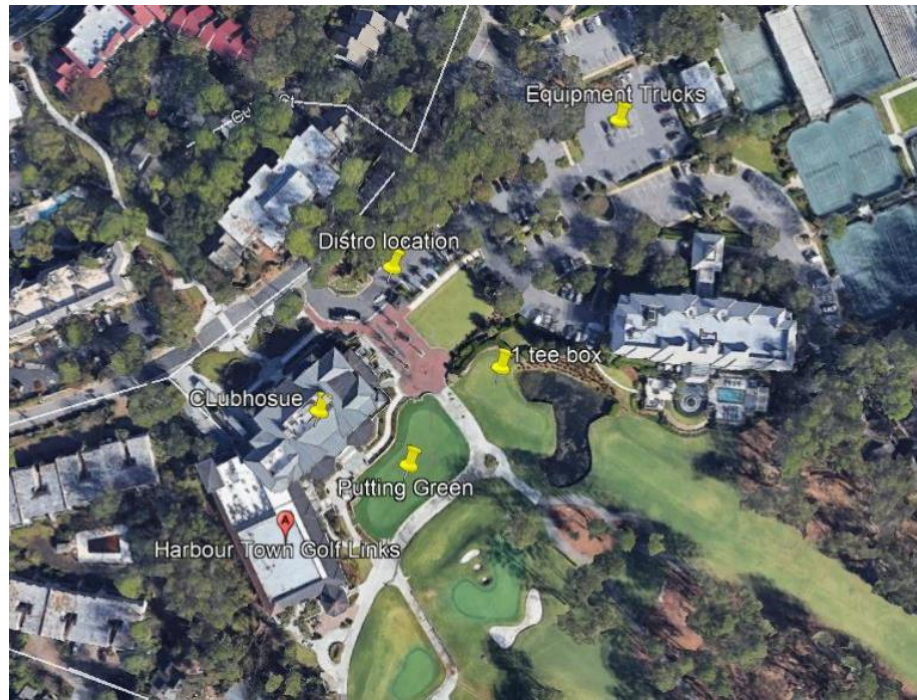


Soft Goods: First floor of the pool/fitness center



**RBC HERITAGE**

Clubs and Hard/Soft Goods: Located in the main parking lot between the clubhouse and equipment trucks



**TRAVELERS CHAMPIONSHIP**

Clubs and Hard/Soft Goods: The First Tee of Connecticut Building



**Rocket Mortgage Classic**

Clubs and Hard/Soft Goods: Located by the maintenance area next to the range and equipment trucks

